



# McAfee SpamKiller for Mail Servers

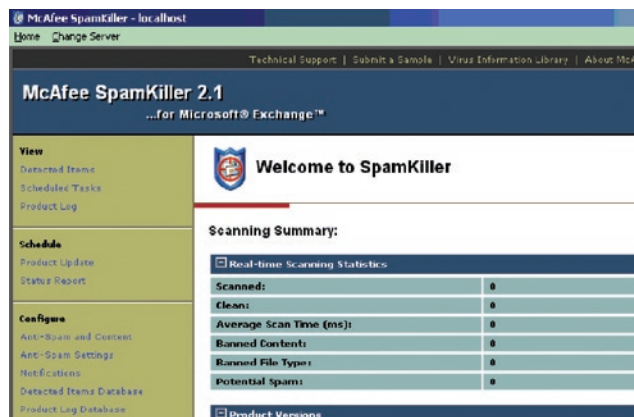
Stop spam at your mail servers

**Spam—unwanted, unsolicited email—consumes precious space on your mail servers, wasting your bandwidth and network storage. It also distracts your users from their work.**

McAfee® SpamKiller® for Mail Servers helps keep your Microsoft® Exchange and Lotus Domino mail servers free of spam, phishing, and inappropriate content. SpamKiller for Mail Servers scans inbound email and filters out spam as it reaches the mail server. Spam email can be deleted immediately or quarantined to a server-based or a user-based junk-mail folder. With SpamKiller for Mail Servers, you save space on your mail server, increase employee productivity, and reduce your company's exposure to potential liability issues.

## Industry-Leading Protection

Why settle for good when you can have the best? Independent tests prove that SpamKiller for Mail Servers consistently blocks more than 97 percent of spam—even the latest types of spam based on images and other subterfuges. McAfee anti-spam technologies have earned the prestigious Checkmark PREMIUM Anti-Spam certification by West Coast Labs, its highest level of certification. Streaming updates from McAfee ensure that your protection is always up to date with the latest spam-fighting and phish-fighting tools.



McAfee SpamKiller

## Integrated Anti-Virus Protection

SpamKiller for Mail Servers easily integrates with McAfee GroupShield® for Mail Servers (available separately). Your business is protected from today's threats—viruses, spam, phishing, and inappropriate content.

## Multiple Anti-Spam Technologies

McAfee's threat experts monitor spammer activities 24/7 and identify new spam techniques before they are ever used in a spam campaign. This unique detection technique—known as McAfee domain-name reputation technology—can block up to 40 percent of spam attacks even before they occur.

In addition, McAfee employs several other very effective anti-spam techniques that, when used in combination, provide the most accurate anti-spam protection you'll ever need.

- Image detection identifies and blocks the latest types of image-based spam, while letting legitimate images pass through
- Integrity analysis examines the header, layout, and organization of each email message and identifies common spam characteristics
- Heuristic detection provides protection against first-time spam that does not contain any URLs, as well as phishing messaging
- Bayesian filtering intelligently assesses your email messages for spam and non-spam based on criteria specific to your business
- Content filtering uses keywords, phrases, and embedded URLs to identify spam email
- Blacklists and whitelists let your administrator and users ensure that important messages will not be blocked

## Enterprise-Scalable Management

SpamKiller for Mail Servers leverages your investment in McAfee ePolicy Orchestrator® (ePO™), the industry-leading, centralized single console, to manage security and enforce protection. Comprehensive, graphical reports from ePO



keep you informed of your security posture. McAfee ePO lets you centrally manage anti-virus, anti-spyware, anti-spam, anti-phishing, and web filtering solutions for gateway devices, email servers, and desktop systems.

In addition, ePO provides remote deployment, so that large enterprise rollouts can be managed easily from a central location.

## Protected by McAfee Anti-Spam Research Team

McAfee's Anti-Spam Research Team is the world's preeminent anti-spam and anti-phishing research organization. With its origins in the proven security research of McAfee Avert® Labs, the McAfee Anti-Spam Research Team provides around-the-clock analysis and protection to combat the latest spam attacks as they are launched. Fighting spam is a game of cat-and-mouse, and it requires expertise, resources, and a rapid response to be truly effective. McAfee has the unique ability to provide the industry's most comprehensive security protection, and you can be sure that as new spam emerges, McAfee will be there to stop it.

## McAfee Solution Services

Along with our McAfee SecurityAlliance™ partners, McAfee offers a wide variety of services to help you assess, plan, deploy, tune, and manage your security.

## Technical Support

Make sure that everything runs smoothly during and after installation with flexible programs from McAfee Technical Support. Our highly skilled and certified security specialists have a wealth of knowledge and resources to meet your security needs.

## Learn More

Visit [www.mcafee.com](http://www.mcafee.com), or call us at 888.847.8766, 24 hours a day, seven days a week.

McAfee SpamKiller for Mail Servers is part of the McAfee family of business security products and services. McAfee provides a comprehensive portfolio of security risk management solutions that secure your business advantage.

## System Requirements

**Note:** The following are general system requirements and may vary depending on the nature of your environment.

### Microsoft Exchange

Email platform: Microsoft Exchange 2000, 2003, or 2007 Server, or 2000 Advanced Server

Operating system: Microsoft Windows® 2000 or 2003

Mailbox limit: Unlimited

Disk space: 200 MB free disk space or higher

Memory: 512 MB RAM or higher

Processor: 400 MHz Pentium II or higher

### Lotus Domino

Email platform: Lotus Domino 5+, 6+, or 6.5

Operating system: Microsoft Windows 2000 or 2003

Mailbox limit: Unlimited

Disk space: 700 MB for Lotus Domino 5.0 or higher

Memory: 512 MB RAM and 139 MB of paging space

Processor: 400 MHz Pentium II or higher