

McAfee Endpoint Protection Essential for SMB

You grow your business. We keep it secure.

With the internet and connected devices now an integral part of your business, your employees' digital lives and your business are constantly at risk of a cyberattack. Your time is valuable, and your security shouldn't slow you down. Whether you own a media agency, a restaurant, a law firm, or any other type of small to medium-size business (SMB), protecting your endpoints should be simple and affordable. McAfee® Endpoint Protection Essential for SMB provides superior protection for your business that is Smart, Simple, and Secure.

McAfee Endpoint Protection Essential for SMB offers cost-effective security that's easy to use and delivers immediate, up-to-the-minute protection from dangerous threats, like viruses, worms, Trojans, targeted attacks, spyware, drive-by-downloads, and more. For more than 25 years, McAfee solutions have protected SMBs with industry-leading security solutions for desktops, laptops, servers, email, and the web.

McAfee Endpoint Protection Essential for SMB combines award-winning McAfee threat protection technologies, along with web and data protection—to secure your internal IT infrastructure.

Backed by McAfee Global Threat Intelligence (McAfee GTI), you get real-time protection. McAfee GTI provides the most comprehensive threat intelligence in the market. Powered by a worldwide network of threat sensors and a global, dedicated research team, McAfee

GTI gives users visibility across all threat vectors—file, web, message, and network—and a view into the latest vulnerabilities. Rely on security expertise from McAfee, so you can stay focused on your business.

Smart Performance

- **High performance with streamlined design—**Your endpoint security client comes with integrated modules that work in tandem to protect your systems from a wide range of security threats.
- **Minimized desktop footprint—**The solution's optimized architecture provides a light and lean footprint that uses minimal disk space and improves system boot time.
- **Zero-impact user scanning—**Resource-based smart scanning only performs scans when the device is not in use and resumes after shutdown or restart to ensure employee productivity is not impacted.

Key Advantages

- Intuitive security that lets you rely on McAfee expertise, so you can focus on your business
- Simplified management—on your terms—from the cloud or on premises
- Comprehensive protection against cyberthreats with McAfee Global Threat Intelligence
- Affordable security with 24/7 access to support just a phone call away



Smart



Simple



Secure

DATA SHEET

Simple Solution

- **Enjoy flexible security on your terms**—Manage your business security the way you want by deploying in the cloud or on premises using your own server. And, with the solution's single management console, you gain strong control over your business security by defining policies, generating compliance reports, and adding or removing devices.

- **Simple installation saves time and setup costs**—

Spend less time managing security and more time on your core business activities with a simple installation that lets you get up and running in four clicks and less than 20 minutes.

Powerful Protection

- **Always-on, real-time malware protection**—McAfee GTI gives you the most comprehensive, real-time protection against cyberthreats.

McAfee Endpoint Protection Essential for SMB Features

Threat Protection

Protects desktops, laptops, and servers from viruses and malware

Protects Windows and Macintosh

Restricts access to folders in the event of an attack, limiting damage

Prevents exploits

Ensures only legitimate traffic is allowed through the desktop firewall

Web Security

Reduces web-related threats with strong control and guided web usage

Data Protection

Prevents data loss by restricting unauthorized access of removable devices*

Security Management

Deployed and managed using your own server

Deployed and managed using the cloud

Powered by McAfee Global Threat Intelligence

* Available in on-premises version of the product

Table 1. Features and Deployment Options

McAfee Endpoint Protection Essential for SMB includes:

- McAfee ePolicy Orchestrator® (McAfee ePO™)
- McAfee ePO Cloud
- McAfee Endpoint Security 10 for Windows and Macintosh
- McAfee Device Control

System Requirements

- **Client computers:** Windows and Macintosh
- **Servers:** Windows and Macintosh

For details, please visit the product page on www.mcafee.com/endpoint-smb-en.

Free 30-Day Trial

Experience the value of McAfee cloud-based security solutions with a free 30-day trial. Visit www.mcafee.com/endpoint-smb-en.

Learn More

Call us at 888.847.8766, 24 hours a day, seven days a week.

McAfee Solution Services Partners:

McAfee partners offer professional services that range from installation to management. Contact McAfee today to learn how [McAfee Partner Portal](#) can help you.

DATA SHEET

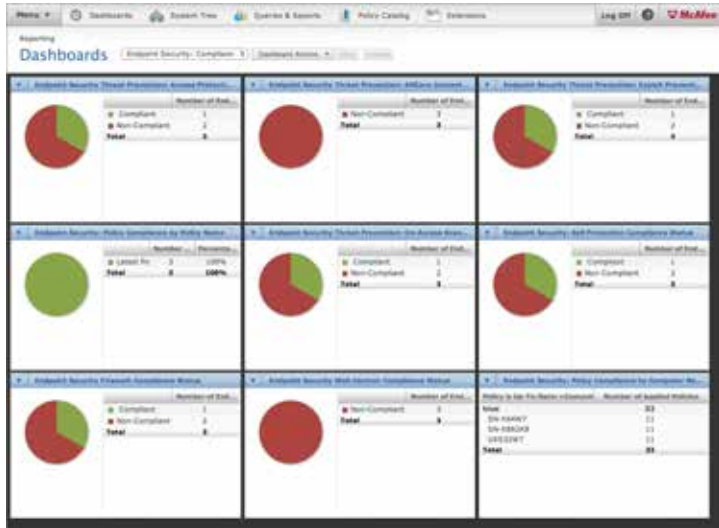


Figure 1. Manage your business security using a simple dashboard on premises or in the cloud.

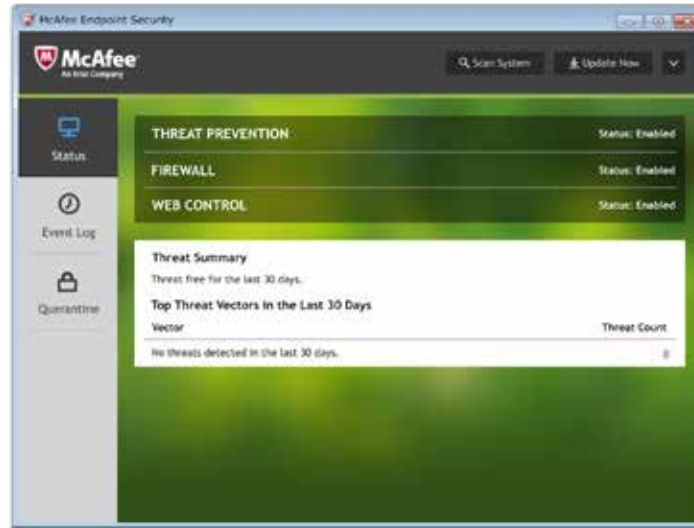


Figure 2. Intuitive user interface for local configuration.



2821 Mission College Boulevard
 Santa Clara, CA 95054
 888 847 8766
www.mcafee.com

McAfee and the McAfee logo, ePolicy Orchestrator, and McAfee ePO are trademarks or registered trademarks of McAfee, LLC or its subsidiaries in the US and other countries. Other marks and brands may be claimed as the property of others. Copyright © 2017 McAfee, LLC.
 62277ds_endpoint-smb_0216
 FEBRUARY 2016