



TAKE AN INTEGRATED APPROACH TO ADVANCED THREATS

Most security professionals know



30%

of organizations have no advanced malware security tools or invested in detection only¹



35% of IT pros worry about detecting advanced threats²



22% worry about protecting from them²



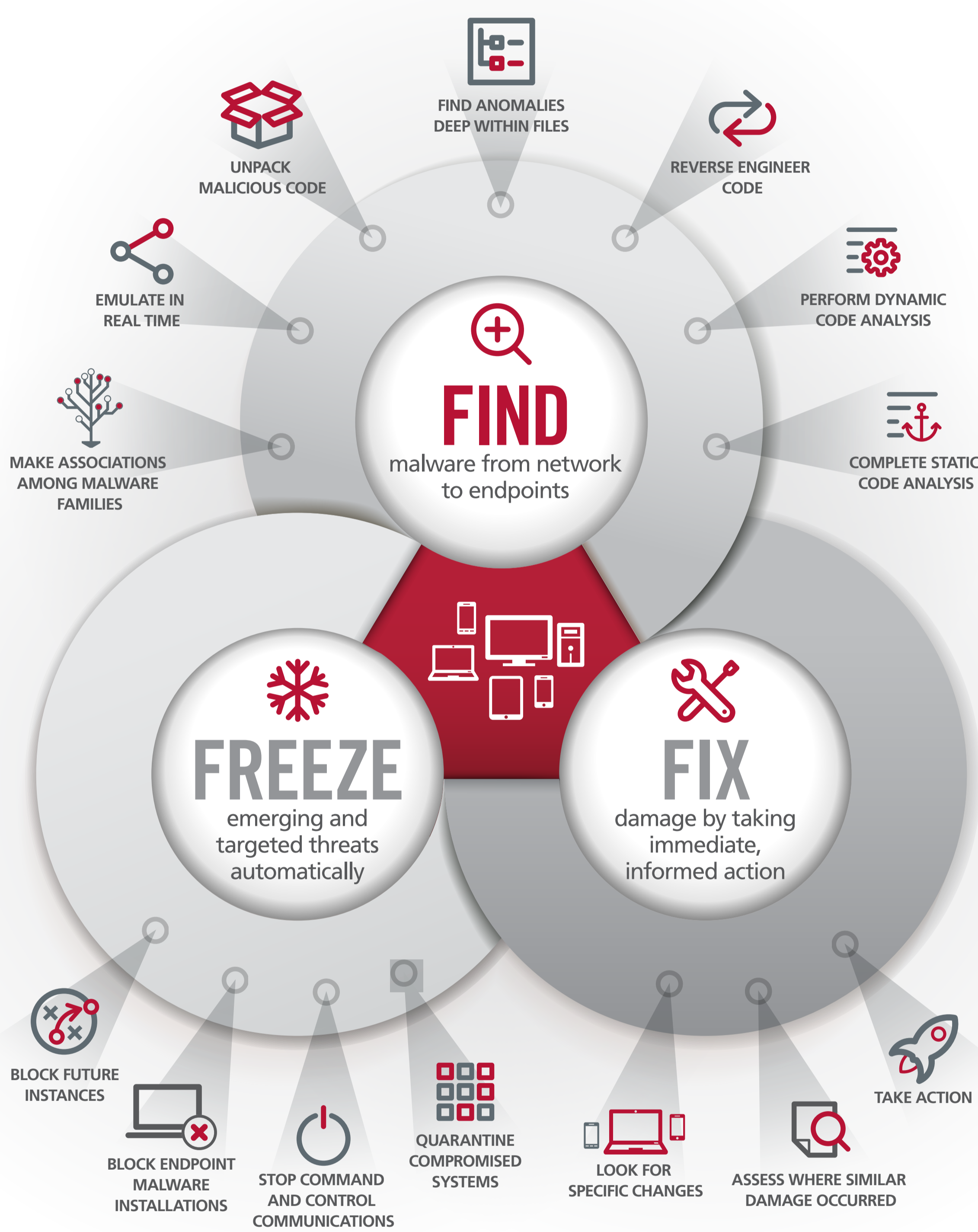
20% worry about chasing false positives²



20+ Hrs/Week

More than 20% spend more than 20+ hours/week on finding, freezing, and fixing advanced threats.¹

McAFEE PROVIDES AN INTEGRATED APPROACH TO ADVANCED THREATS: **FIND. FREEZE. FIX.**



IT ALL STARTS WITH "FIND"...

McAfee® Advanced Threat Defense uses a layered approach to detect the latest stealthy, zero-day malware.



OBSERVES HOW SUSPECT FILES BEHAVE



DIGS INTO CODE TO UNEARTH WHAT IT MIGHT DO—NOW OR LATER

... AND INTEGRATES WITH "FREEZE" AND "FIX"

McAfee Advanced Threat Defense shares intelligence with other McAfee solutions to automatically take action:



INTEGRATES WITH McAFEE NETWORK SOLUTIONS, TO PROVIDE IN-LINE BLOCKING CAPABILITIES



INTEGRATES WITH McAFEE ENDPOINT SOLUTIONS TO DISCOVER INFILTRATION AND REMEDIATE

LEARN MORE ABOUT McAFEE ADVANCED THREAT DEFENSE

Visit www.mcafee.com/ATD, or contact your McAfee representative.

¹ Webtorials. "Doing Battle with Advanced Malware." February 2014. <http://www.mcafee.com/us/resources/reports/rp-battle-with-advanced-malware.pdf>.

² McAfee. "Black Hat USA 2013 Survey of IT Security Professionals." 2013. <http://blogs.mcafee.com/business/combating-advanced-malware-mcafee-survey-at-black-hat-usa-2013>.

